

Organizing Boards

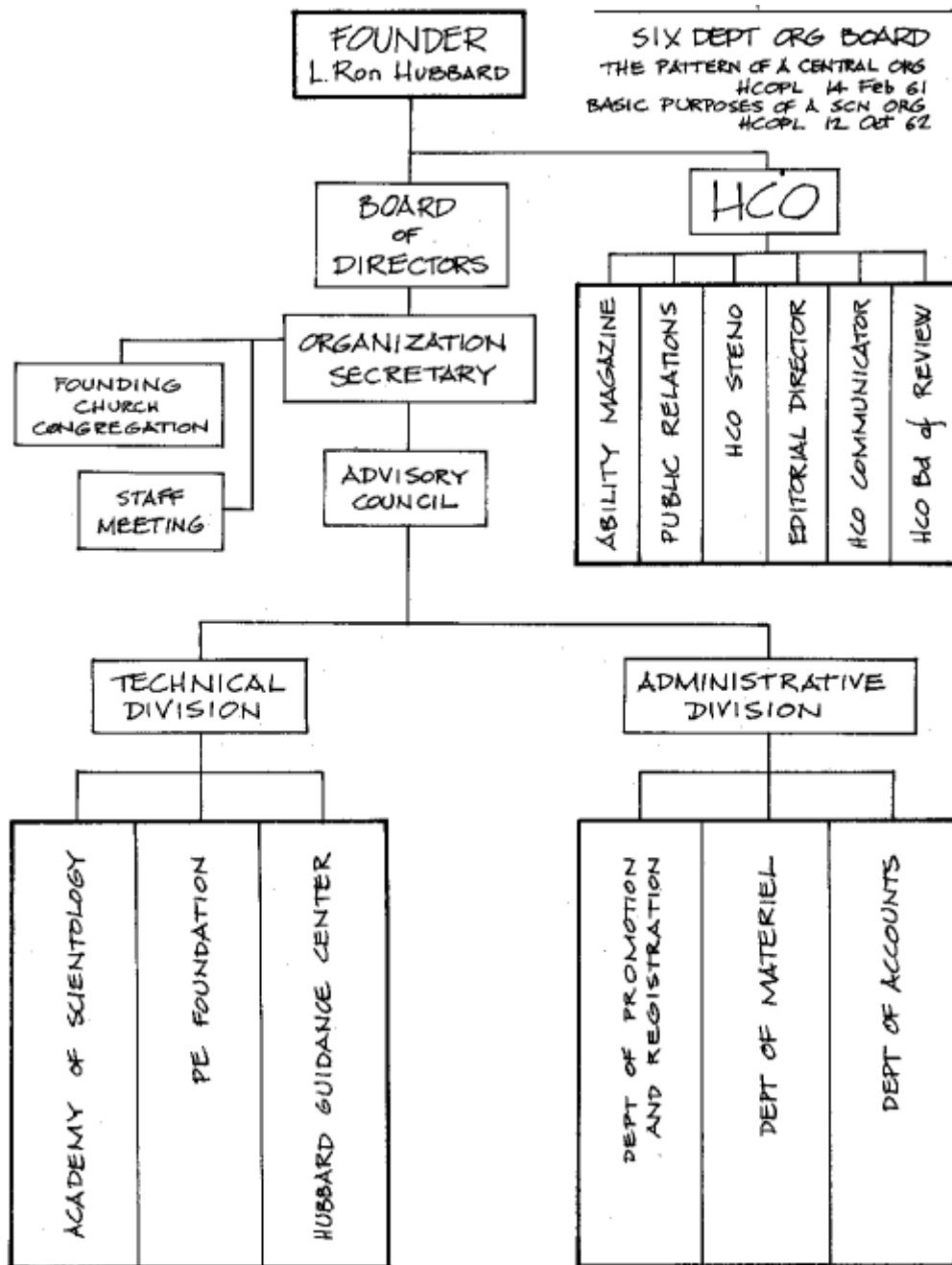
This Section shows several diagrams of major Scientology Organizing Boards used between 1961 and 1976. These are basic outlines showing mainly the divisions and/or departments of each organization. In reality each of these org boards would have a lot more post titles on them and the sections, units and functions would also be written in.

A lot of post titles, functions, divisions, departments, bureaux, etc., defined in this dictionary refer to or belong on these org boards.

Thus the purpose of this section is to briefly show the organization form that the definitions refer to. At the right hand corner of each diagram are the references that each board is based on.

It is easy to see that all Scientology Organizing Boards since 1965 have been variations of the Seven Division Org Board of 1965, which is *the* basic Scientology org board from that time forward. Any business activity could be adapted to run more successfully on the Seven Division Org Board of 1965.

Please note that the Org Boards shown in this section are not the most recently authorized Org Boards. New Scientology Org Boards will soon be released.



EXEC DIR

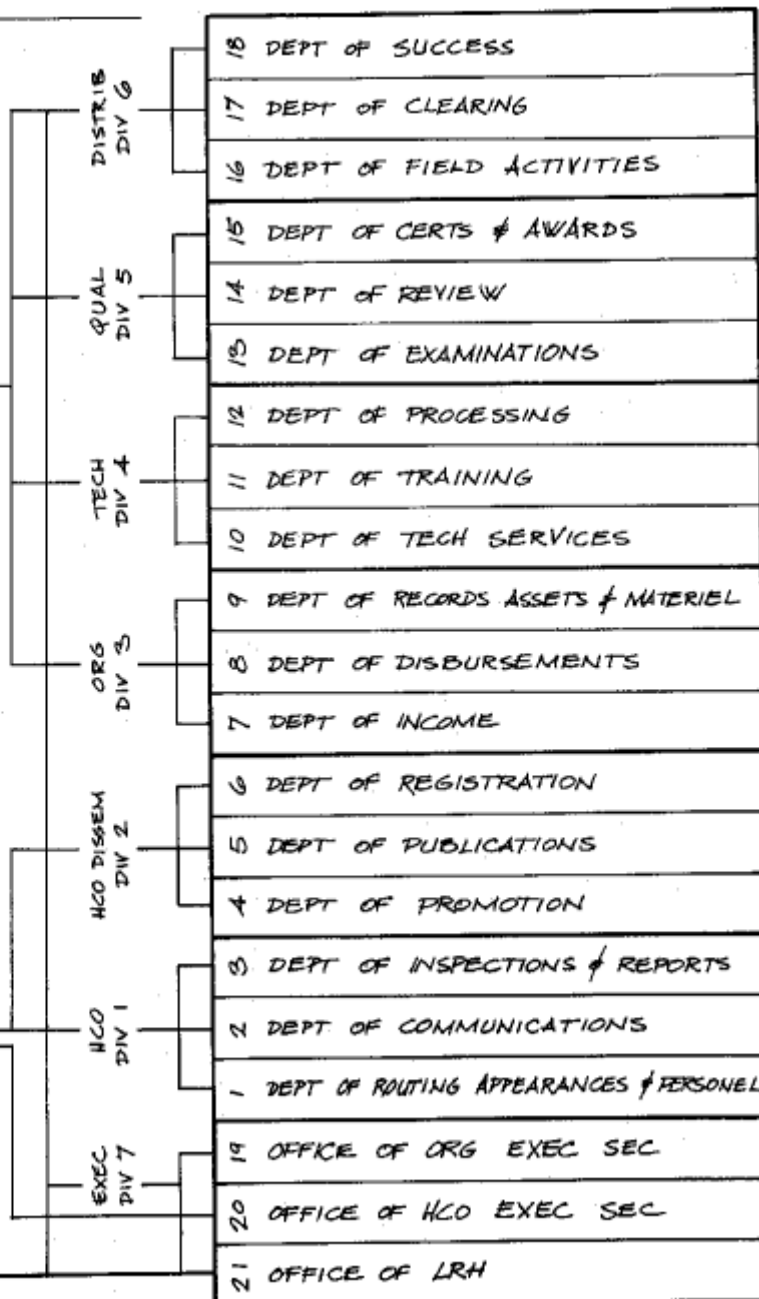
SEVEN DIV ORG BOARD 1965
THE PROMOTIONAL ACTIONS OF AN ORGANIZATION
HCOPL 20 NOV 65

HCO

ORG

HCO EXEC SEC

ORG EXEC SEC



FOUNDER

SIX DEPT ORG BOARD
IMPORTANT-SIX DEPARTMENT SYSTEM
HCOPL 21 Oct 66

HCO

ORG

HCO SEC

ORG SEC

OFFICE
OF LRH

HCO
DEPT 1

DISSEM
DEPT 2

TREASURY
DEPT 3

TECH
DEPT 4

QUAL
DEPT 5

DISTRIB
DEPT 6

1 ROUTING APPEARANCES PERSONNEL SECTION

2 COMMUNICATIONS SECTION

3 INSPECTIONS & REPORTS SECTION

4 PROMOTIONS SECTION

5 PUBLICATIONS SECTION

6 REGISTRATION SECTION

7 INCOME SECTION

8 DISBURSEMENT SECTION

9 RECORDS ASSETS & MATERIAL

10 SERVICES SECTION

11 TRAINING SECTION

12 PROCESSING SECTION

13 EXAMINATIONS SECTION

14 REVIEW SECTION

15 CERTS & AWARDS SECTION

16 PUBLIC INFORMATION SECTION

17 CLEARING SECTION

18 SUCCESS SECTION

ESTATES SECTION

LRH COMMUNICATOR

BOARD OF DIRECTORS

COMMODORE
(Deputy of Brd of Directors)

COMMODORE'S STAFF

CAPTAIN

SUPERCARGO

CHIEF OFFICER

1st MATE

2nd MATE

3rd MATE

PURSER

1st MATE

4th MATE

PUBLIC OFFICER

18 Public Planetary Control Officer

17 AO Control Chief

16 Public Relations Officer

15 Qualifications Chief

14 Review Chief

13 Examinations Chief

12 Operations Chief

11 Boatswain

10 Construction Chief

9 Chief Steward

8 Supply Chief

7 Director of Accounts

6 Directions Chief

5 Preparations Chief

4 Plans Chief

3 Master at Arms

2 Communicator

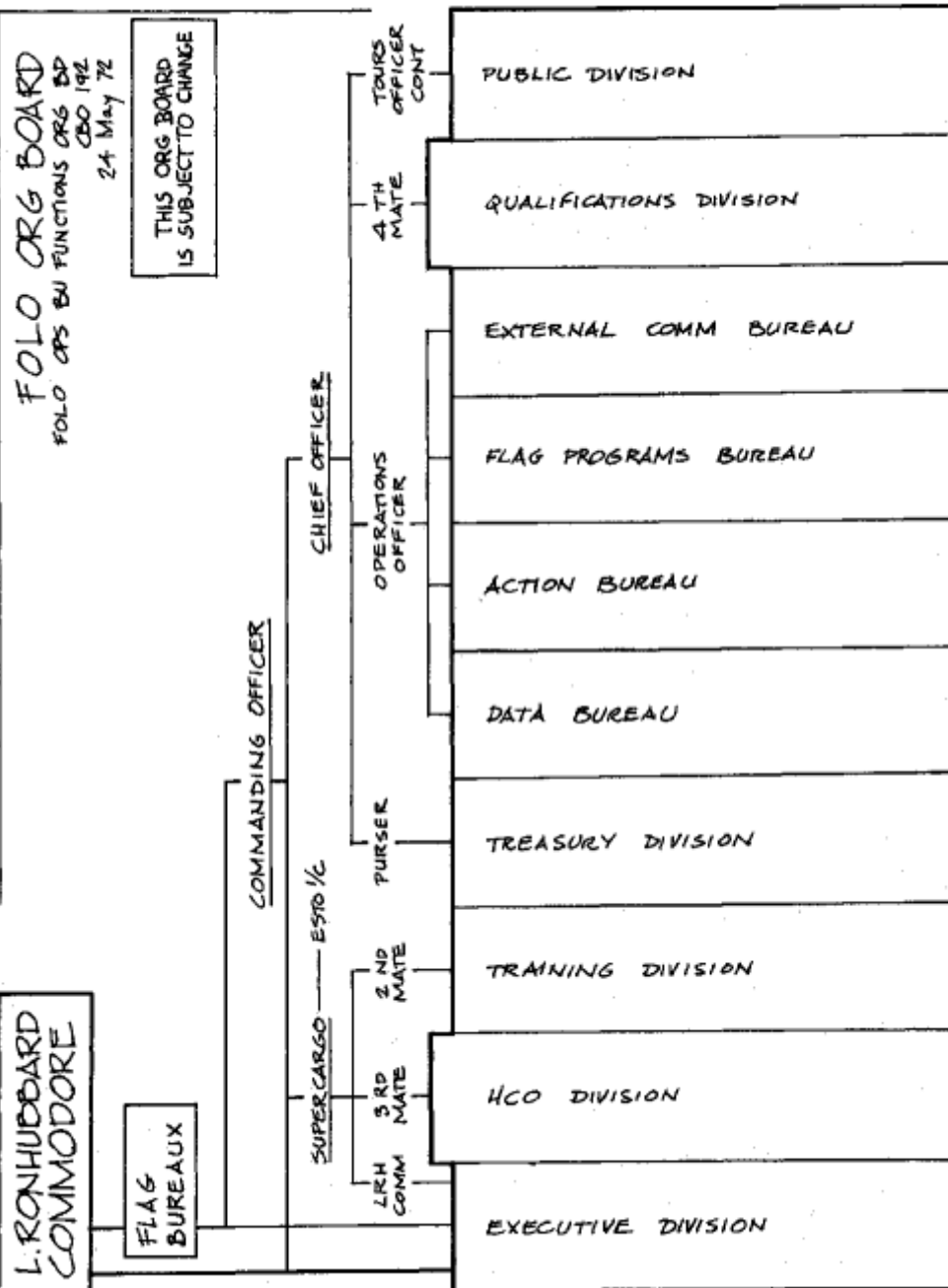
1 Chief Yeoman

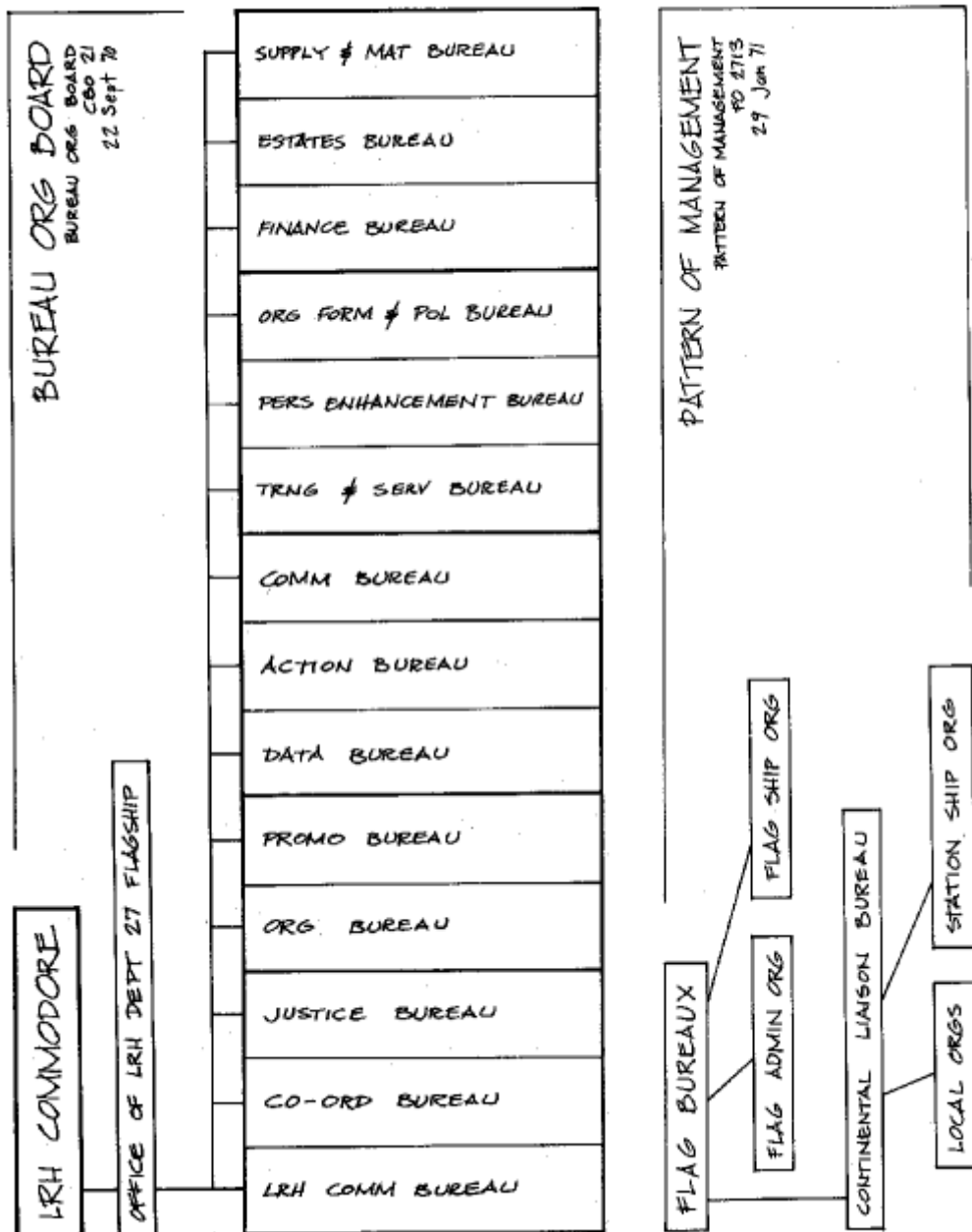
19 Office of the Chief Officer

20 Office of the Supercargo

21 Office of the Captain

FLAG SHIP ORG BOARD 1968
FLAG ORDER 1109
26 July 68





FOUNDER

GUARDIAN W/W

SEVEN DIV ORG BOARD 1973
MINI 7 DIVISION ORG BOARD and
TECH ADMIN RATIO
HCOPL 15 May 73

EXECUTIVE DIRECTOR

HCO EXEC SEC

ORG EXEC SEC

EXEC
DIV 7

HCO
DIV 1

HCO DISSEM
DIV 2

TREASURY
DIV 3

TECH
DIV 4

QUAL
DIV 5

DISTRIB
DIV 6

21 OFFICE OF LRH

20 OFFICE OF THE CONTROLLER

19 OFFICE OF THE EXEC DIR

1 DEPT OF PERSONNEL

2 DEPT OF ROUTING & COMMUNICATION

3 DEPT OF INSPECTIONS & REPORTS

4 DEPT OF PROMOTION

5 DEPT OF PUBLICATIONS

6 DEPT OF REGISTRATION

7 DEPT OF INCOME

8 DEPT OF DISBURSEMENTS

9 DEPT OF RECORDS ASSETS MATERIEL

10 DEPT OF TECH SERVICES

11 DEPT OF TRAINING

12 DEPT OF PROCESSING

13 DEPT OF VALIDITY

14 DEPT OF PERSONNEL ENHANCEMENT

15 DEPT OF CORRECTION

16 DEPT OF PUBLIC INFORMATION

17 DEPT OF PUBLIC SERVICING

18 DEPT OF CLEARING

